

# Hiking the Decalogue Stone trail on Hidden Mountain – Aug 14, 2015

Psa 11:3 **If the foundations be destroyed**, what can the righteous do?

What is the foundation in any nation – the Law. Without laws governing a society then there is anarchy. Without God’s law in society there is lawlessness and Satan’s kingdom prevails because there is only 2 kingdoms and 2 laws – rejecting Jesus’ laws automatically places you in Satan’s kingdom.

One of the earliest foundational writings of the United States is the Mayflower Compact in 1620 which states the pilgrims came for: *“for the glory of God, and advancement of the Christian faith”*.

**2 Kingdoms**  
**Col 1:13** Who hath delivered us from the **power of darkness**, and hath translated *us* into the **kingdom of his beloved Son:**

The US has fallen down from that dependency of Jesus to now the government adhering to “separation of church and state” which never appears in the Constitution or Declaration of Independence. The government is supporting various groups who are suing and removing any Christian belief from society (ie: bibles & prayers in school, suing Christians standing up against homosexual marriage....). The foundation of the US has been broken.



There is an artifact in the middle of the United States in New Mexico that I believe prophetic showing the fall of God’s laws in this country.

“Out-of-place artifact” is what the Decalogue stone is labeled as. It’s an object that shouldn’t be in existence in the middle of the United States but it is. The Decalogue Stone is a 80 ton boulder with Phoenician (Paleo-Hebrew) writing on it that’s 15 miles west of Los Lunas New Mexico. Various speculation date it back to King Solomon’s time (~1,000 BC).

The Decalogue stone is the 10 commandments written in Paleo-Hebrew – see below translation. The top line was destroyed somewhere between April 9 and 12, 2006 in a hate crime against Jesus and His laws.

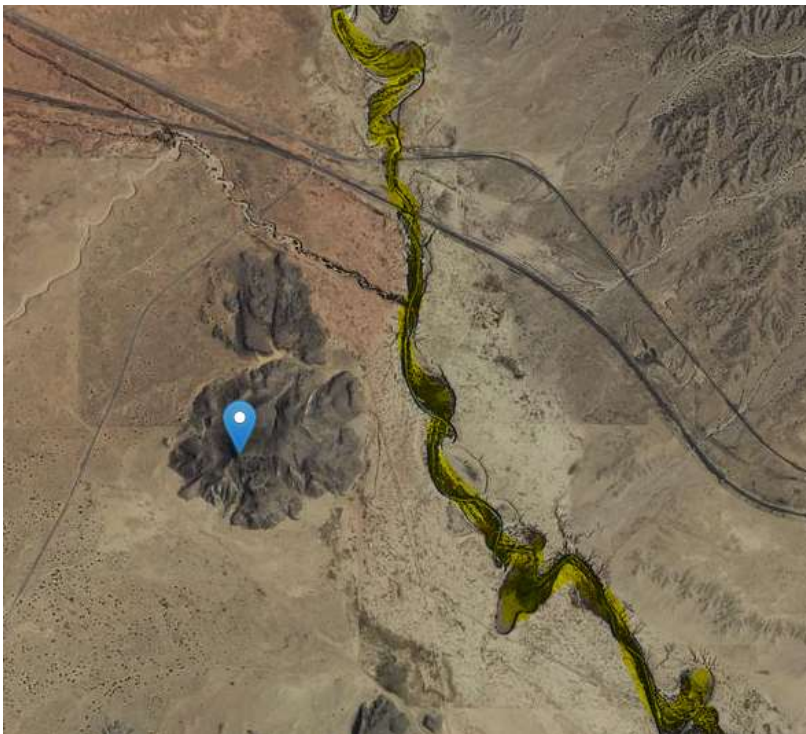
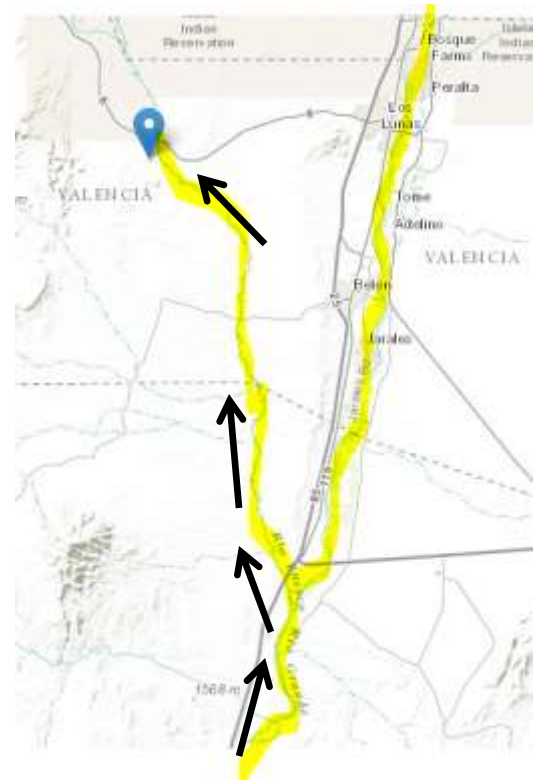
P4X4 XMTX P4E 9WX XHELEX E4EM MKYX  
 out of the land has taken you who your God Jehovah I (am)  
 • M4E7 LO 4M9HX 4HELEX EHEM XL  
 my face (1) before other gods there be not  
 XWT XL . L47 KL ELOT XL A 4MΔ9O TMS4 4M9P4  
 take not idol shall you make not (2) of slaves from house of Egypt (3)  
 44M TX 94XXZ . X4WL E4EM 4W TX  
 day of Remember (7) in vain Jehovah name (4)  
 LO4L X4X TX4 XMSX TX Δ9K . 4WΔXL T9WE  
 so that and your mother your father Honour to keep holy the sabbath  
 XHELEX E4EM 9WX E4ΔXE LO XMYM 44P9X  
 your God Jehovah that ground upon your days will be long  
 XL . 94YT XL . 74YT XL . HP4T XL . KL 4TM  
 not you must steal not you commit adultery not you must murder not to you has given (5)  
 XOK TWX Δ4HT XL . 9KW ΔOKOP9 E4OT  
 your neighbour wife of you must desire not false (6) witness against neighbour give testimony  
 • XOKL 9WX LX4  
 is your neighbours that and all

## Modern Translation

I am Jehovah your God who has taken you out of the land of Egypt, from the house of slaves. There must be no other gods before my face. You must not make any idol. You must not take the name of Jehovah in vain. Remember the sabbath day and keep it holy. Honour your father and your mother so that your days may be long in the land that Jehovah your God has given to you. You must not murder. You must not commit adultery. You must not steal. You must not give a false witness against your neighbour. You must not desire the wife of your neighbour nor anything that is his.

## How did the inscription get there?

Looking on the map on the left below shows the path of the Rio Grande river that stretches from the Gulf of Mexico and passes thru New Mexico and ending in Colorado. The map on the right below shows that a tributary river called Rio Puerco flows right by the blue marker which indicates the location of Hidden Mountain – the location of the Decalogue Stone.



To the left is the Rio Puerco in highlight with the blue marker on Hidden Mountain (note the blue marker is not on the Decalogue stone). 3,000 years ago the climate and terrain probably was much different than the desert condition at present times.

## Who wrote the commandments on the Stone?

Someone with the knowledge of the laws of God. The farthest back in the bible shows that King Solomon made a navy of ships (1King9:26) and that once every 3 years they went out and came back loaded with gold, silver, ivory and animals (2Ch9:21). Hauling Gold and silver requires a stout ship. Israel knew how to build boats capable of carrying heavy loads – Noah's ark comes to mind.

**1Ki 9:26** And **king Solomon made a navy of ships** in Ezion-geber, which *is* beside Eloth, on the shore of the Red Sea, in the land of Edom.

**1Ki 9:27** And **Hiram sent in the navy his servants, shipmen that had knowledge of the sea**, with the servants of Solomon.

**1Ki 9:28** And they came to Ophir, and imported from thence gold, four hundred and twenty talents, and brought *it* to king Solomon.

**2Ch 9:21** For the king's ships went to Tarshish with the servants of Hiram: **once every three years came the ships of Tarshish bringing gold, and silver, ivory, and apes, and peacocks.**

## How does one visit the 10 commandment rock (Decalogue stone)?



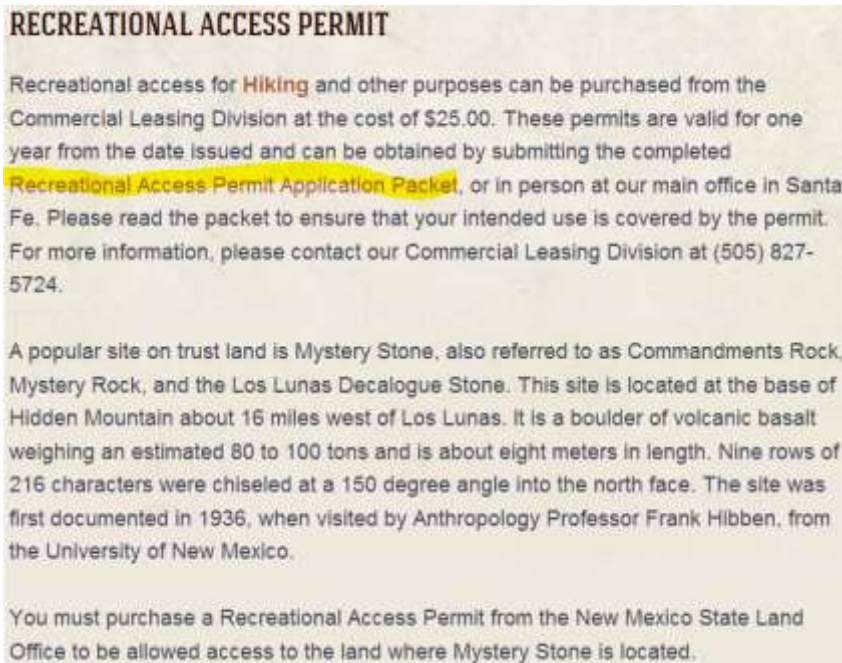
How risky do you take your hikes? You will see a sign threatening prosecution for trespassing at the entrance to the trail to the 10 commandment rock. If you are a law abiding citizen, not wanting to be prosecuted – what do you do?

You first must get a recreational land use permit (\$25 per family of 10) by the state of New Mexico located at 310 Old Santa Fe Trail, Santa Fe NM.

You can fill out the paperwork by clicking on the link:

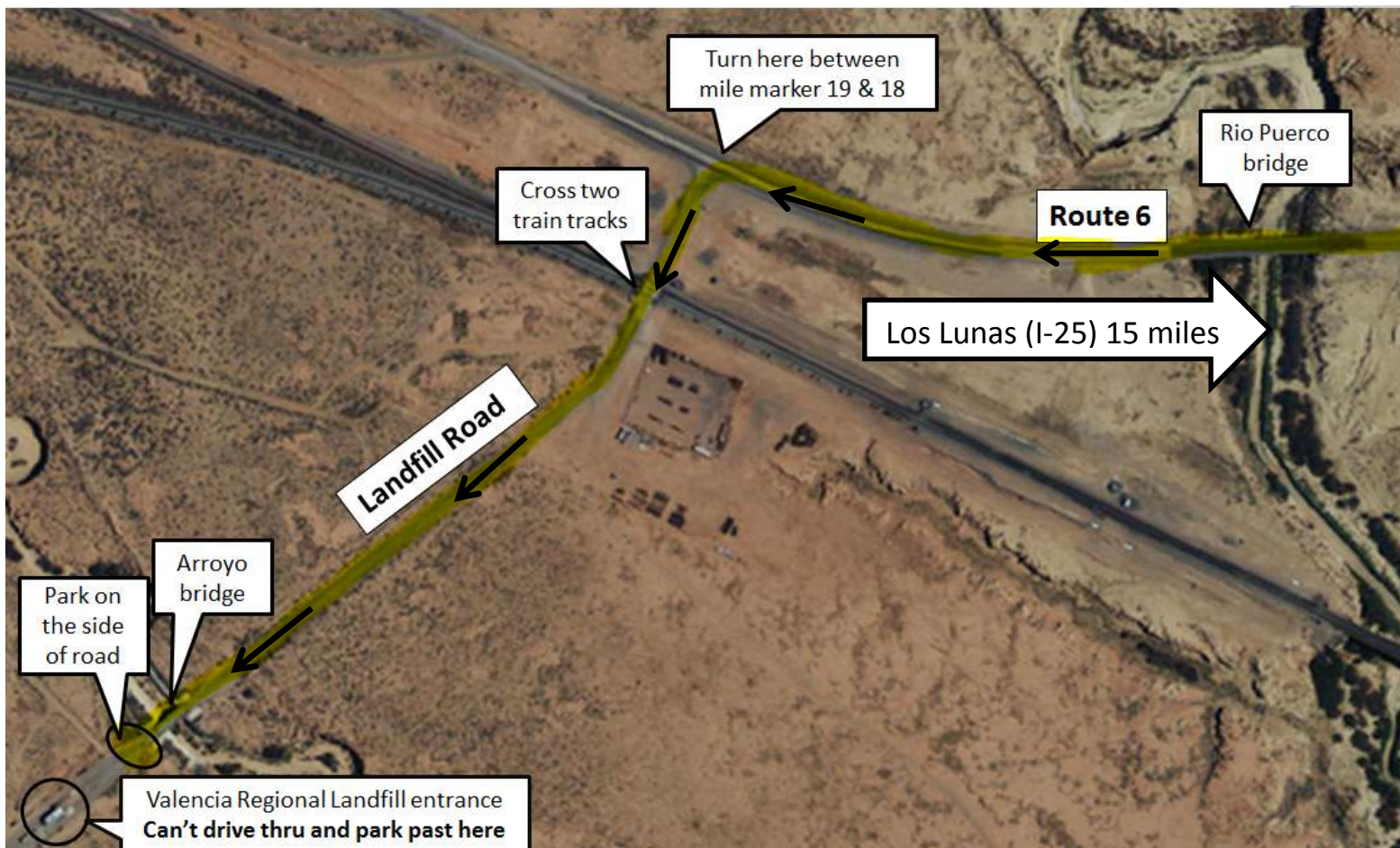
[http://www.nmstatelands.org/Recreational\\_Access.aspx](http://www.nmstatelands.org/Recreational_Access.aspx)

Click on the ‘Recreational Access Permit Application Packet’ on the page which will open an editable PDF form which you can fill out and print. Mail a check for \$25 with the form to the address indicated. Don’t make the mistake of taking the completed paper work and money to the Sante Fe office expecting to get the land use permit on the same day – that won’t happen. They said it takes at least a week or so to process the paper work and receive the use permit. Plan ahead and submit the paperwork/fee well ahead of your planned visit.



The land office provided us with 4 documents (see attachments at end) which can be confusing. I have created a better descriptive route with pictures to those persons desiring to see the stone and not get lost or confused and frustrated.

- From Los Lunas: drive west on route 6.
- Once you cross over the Rio Puerco Bridge then about 1,000 ft later you'll come to a left turn: turn left.
- Drive over the double train tracks.
- Drive over the Arroyo Garcia Bridge.



- You can only park in 2 places after crossing the Arroyo Garcia bridge since the Valencia Regional Landfill entrance blocks further passage down the road.

- You can only park on either side of the road marked by blue circles. Don't park in front of the gates or block the landfill entrance/exit or else you will find your car/truck towed.



- You are now parked, have your backpack with water, camera and other necessities (bear spray for the mountain lions, hiking stick for the snakes...). We prayed for protection and guidance to the stone.

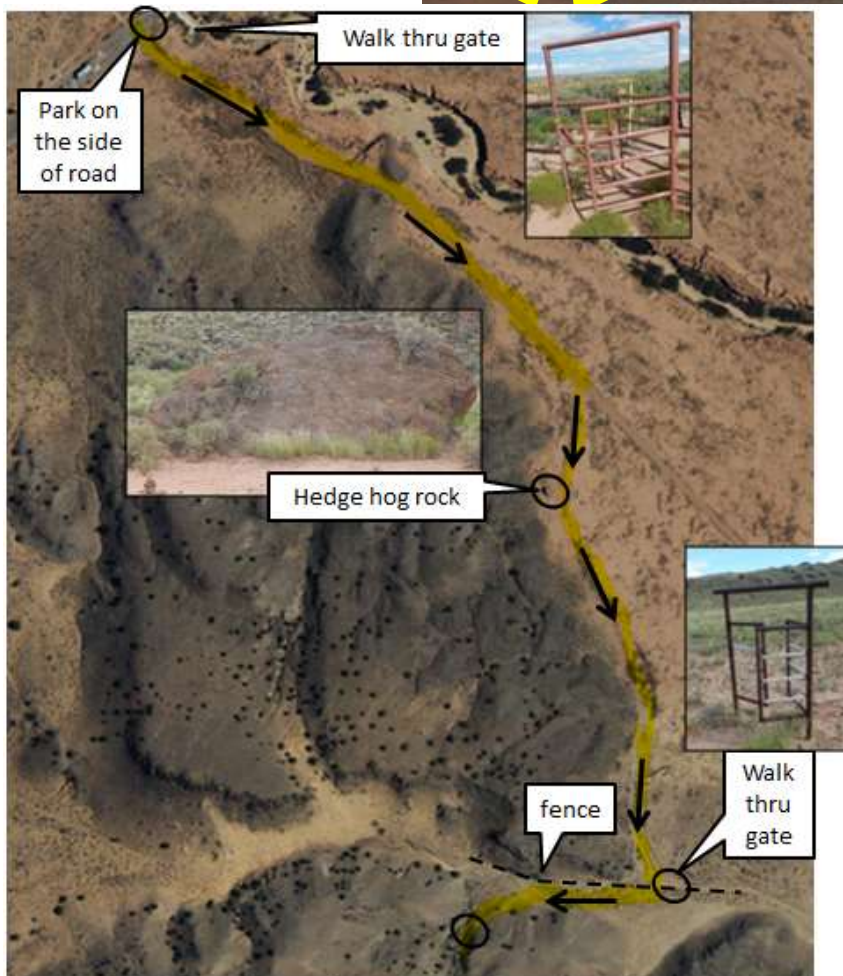
- On the left side of the road you will squeeze thru the access gate shown circled below. The 1 balloon shows a view looking from the road. The yellow arrow indicates the location of the Decalogue stone on the other side of the hills shown by the path in yellow below.

- Walk down the dirt road for about ¼ mile.

- Veer close to the mountain when you see the hedgehog looking rock.

- Keep walking along base of the mountain until you come to a fence which you can either go under the fence or take an easier route and squeeze thru the walk thru gate.

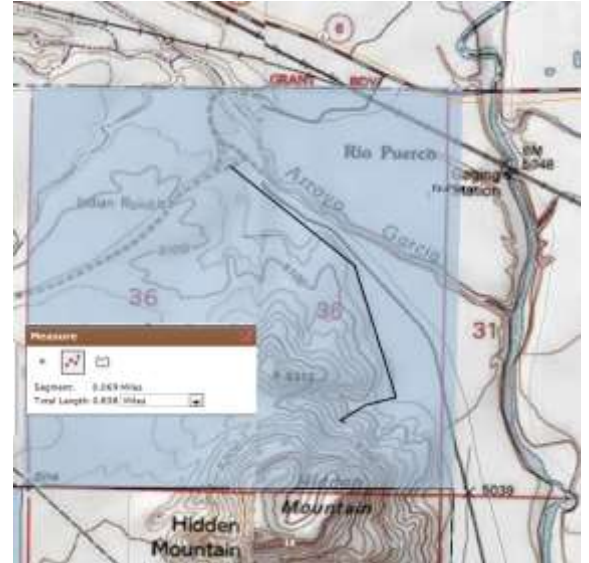
- Walk to your right after the walk thru and you will see a worn path leading to the left up a hill, take it.



The path will have various marker stones along the path showing you that you are on the right path.



The path below highlighted in yellow shows the path on the left. The arrow indicates the location of the stone on the other side of the hill. The New Mexico land office website has an interactive map that can calculate the distance and from the parking area to the stone is about .84 miles on the map.



- Coming over the last bit of the hill you will see the stone lying at the base of a much larger rock with a shade tree (Middle eastern Tamarisk tree) to the right.

## What should you do once you get there?

How about confessing/repenting the sins of our nation that has thrown down His laws and lifted up Satan's law by calling God's law as evil and Satan's pleasures as good (if you can't discern the difference then you have a problem).

**Isa 5:20** Woe to them that call **evil good, and good evil**; that put darkness for light, and light for darkness; that put bitter for sweet, and sweet for bitter!



You can pray over it, anoint it or answer the call of “Whom shall I send” with “Here am I, send me”

Isa 6:8 Also I heard the voice of the Lord, saying, **Whom shall I send,** and who will go for us? Then said I, **Here am I; send me.**

If you decide to hike up the mountain to see the view then the path continues on the other side of the rock which winds up the draw.

On top is a great view. Looking North-ish you can see Rio Puerco and a great vantage point to watch for anyone coming towards you.



## What if the Decalogue stone is fake?

Across the internet are claims that the stone is a fake either created in 1870 or in the 1930s. I say it doesn't matter. If it's fake then who has the last laugh? The state of New Mexico publically advertises the 10 commandments on their tourist web site. The state of New Mexico protects it with land use access fees and threats of trespassing prosecution.

The federal government is tearing down the 10 commandment while the state of New Mexico is lifting it up, protecting it and encouraging people to go see it.

The Decalogue stone brings out questions of the bible and of the Law of God. If ancient Israelites were here then then what caused them to leave and why did the rock fall from a higher location?

I believe that the stone is real. Others can make up their own minds.

Regards.

Called/Chosen + Hear + Believe + Repent + Confess + Baptize + Abide = Salvation -> Proclaim  
Mt22:14 + Lk11:28 + Jn3:16 + Mk6:12 + Rm10:9 + Acts2:38 + Heb10:26 = 1 Pt 3:21 -> Mt28:19-20

A following link to get to New Mexico state land maps that comes in handy for zooming in.

Click on: <http://www.nmstatelands.org>

Click on 'Our Maps' →

Click on 'Interactive Maps'

Click on 'General Land Status'

Zoom in to the indicated box west of Los Lunas



K7-  
CY: CPL  
J. Norwick  
D. BCK

January 9, 2007

Amy Cooper Atchley  
Management Analyst  
Commercial Resources Division  
State of New Mexico  
Commissioner of Public Lands

Dear Amy

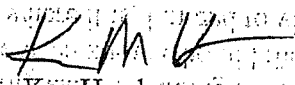
Thanks for the info on the "Mystery Stone" at Hidden Mountain. We found the rock after figuring out which way to orient the map. The map is a little confusing at first. After you cross the tracks and go across the wash/river you take the entry point to your left which is more east than south. The southern road leads into the old landfill and is not the correct route. You follow the gravel track for about 1/4 mile and then turn right towards the mountain at the rock that looks sort of like a Gila Monster. You then head towards the mountain, crawling under/through a fence at some point, and avoiding the bull nearby and hopefully will see a small cairn. The small rock cairn is the marker to the trail to mystery rock and then there is an arrow on a rock wall leading to the side of the alcove, and mystery rock.

There is a wonderful petroglyph just opposite the mystery rock which has the longest tail of any glyph I have ever seen in the west. I did not climb onto the top of Hidden Mountain, as I had just had a molar tooth extracted, but some of my friends did and they enjoyed the top of the mountain. We visited there in mid-November.

It is a shame that much of the first line of the inscription appears to have been vandalized. The rock is so isolated that it must be difficult to keep away vandals. Other than putting an enclosure or fence around it- so relocating it, I think would be hard to keep vandals from doing further damage, and since the location is so isolated- it would be hard to even know who did the damage. I hope that it is not vandalized further, now that I know where it is, I intend to visit it again, and hopefully climb to the top to locate the additional inscriptions on top of Hidden Mountain. I took a number of pictures, and my friends took some while on top.

Thanks again for the information- and for helping me to locate this important "Mystery rock."

Many Blessings and happy New year,



Ken Harsh

297 East Selby Blvd.  
Worthington, Ohio 43085-3623

RECEIVED  
JAN 18 AM 7 40  
STATE OF NEW MEXICO



### Directions to Mystery Stone

- From I-25 near Los Lunas, NM, go west on Rt. 6 on approximately 14 miles
- Cross the Rio Puerco
- A short distance past the bridge over Rio Puerco (approx. 1000 ft), turn south (left) on dirt road
- Cross railroad track, then cross bridge over the San Jose Arroyo
- Park at gate; cross fence at walk-through
- Walk south, following the base of Hidden Mountain
- Turn west at first major alcove; climb on trail to Mystery Stone and top of Hidden Mountain

## Please Respect New Mexico State Trust Land

- Respect this sensitive site and leave it as you found it
- Do not alter or deface the Mystery Stone or other cultural artifacts
- Do not remove any objects from State Trust Land
- Pack out all trash
- Report any problems: 505-841-8705

Thank You!

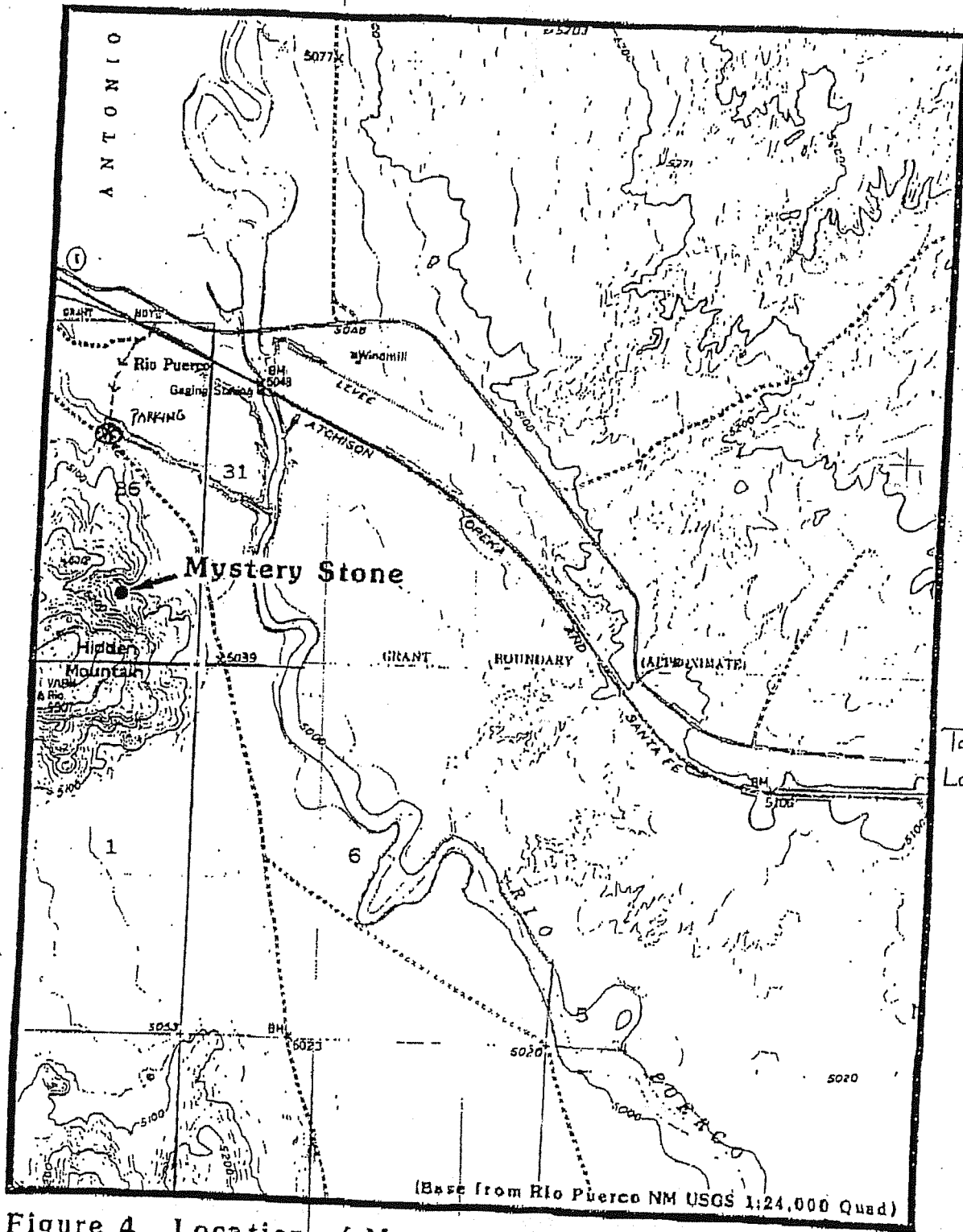


Figure 4. Location of Mystery Stone Glyphs

To get to the trailhead: Take Highway 6 East from I-40 about 20 miles. Watch the right-hand side of the road for the Landfill sign and turn when you find it. There is a good-sized bridge right AFTER the turn-off. That bridge is over the Rio Puerco. The road turns into gravel/dirt, and then you quickly cross the railroad tracks. There is one more single-lane bridge over the San Jose Arroyo as you get to the landfill gates. Park just across the bridge there are some other small dirt roads that head south off of Highway 6. Don't be confused by them. This is a major-looking road and it has the Landfill sign to mark it.

To find the Mystery Stone: Cross the fence at walk-through by parking spot. Hike East on the dirt road until you pass the hills to your right. Then another, smaller dirt road/track heads off toward the south. Not far along this track you will find a 10-foot-highish rock landmark that looks a lot like a Gila monster. Follow the dirt track along the edge of the hills until you come to another barbed-wire fence. Go through the walk-through, head right on the trail, cross a little arroyo. Then follow the path diagonally up the side of the mountain (Hidden Mountain). The rock is not far up the mountain and unmistakable, although the trail continues more faintly past it.

Distance: approximately 1 mile from parking spot.